

nxtwall



FLEX SERIES

architectural walls



NxtWall's Flex Series architectural walls offer flexibility, sustainability, and functionality... all at a competitive price.



Top Left: Unlimited segmentation design options
Lower Left: Veneer, laminate, aluminum, and frameless glass door options
Right: Field-fit, flexible University laboratory installation



The Possibilities are Endless with NxtWall's Flex Series Demountable Walls.

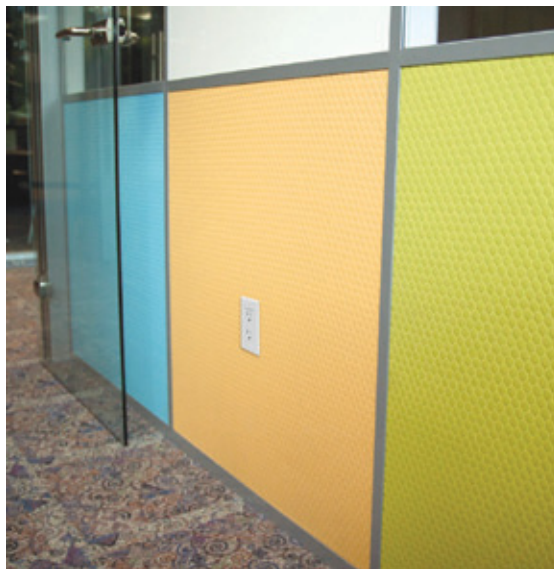
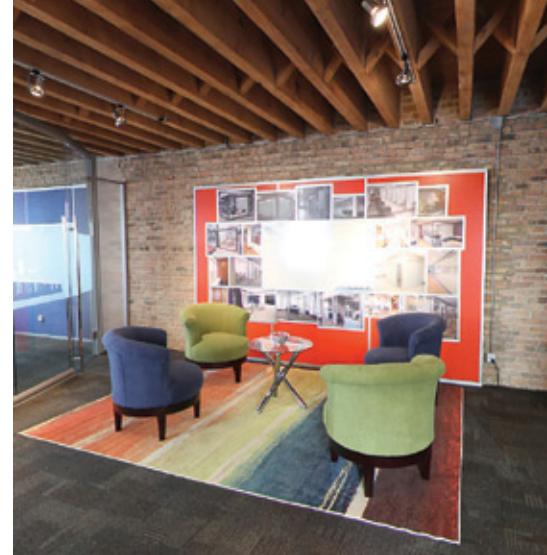
NxtWall is a leader in the demountable wall industry because our Flex Series is one of the most functional, sustainable, and affordable wall systems available on the market. Offering numerous options that are not commonly found within a demountable wall system, NxtWall's flexibility integrates wall finishes, panel substrates, electrical, and data with ease.

Up to 100% recyclable and completely reusable, Flex walls can be reconfigured overnight with minimal work interruptions. NxtWall Flex Series is competitively priced and a perfect alternative to standard drywall construction. The possibilities are endless with NxtWall's Flex Series architectural wall systems.

NxtWall is committed to listening to its customers and delivering architectural product solutions that are always innovative, always affordable... always your next wall...

Left: Corporate glass offices installation with veneer doors





- Left:** Easily add glass clerestory and sidelights to brighten office spaces
- Top Middle:** Sturdy, able to mount cabinets and overhead storage with ease
- Top Right:** Incorporate functional whiteboards into your wall designs
- Above Left:** Power/data configurable at multiple locations and heights
- Above Right:** Integrate technology and media directly into wall designs



Double pane options for glass and other wall substrates to improve privacy and reduce noise

The Five Core Benefits of NxtWall Architectural Wall Systems:

- Flexibility
- Functionality/Performance
- Speed
- Sustainability
- Affordability



SPEED

- Fastest lead times in the demountable wall industry with a 3-5 week standard lead time.
- Changes from solid panels, to glass, to acoustical tackable fabric to whiteboard are seamless and quick.
- Get back to work faster! A single trade can install NxtWall from start-to-finish, as opposed to the extended schedules that come with standard construction methods.

SUSTAINABILITY

- NxtWall products support LEED building design.
- Up to 100% recyclable, reusable, and reconfigurable- keeps drywall and debris out of our landfills.
- Eco-friendly finishes available.
- Daylight harvesting with use of our glass walls.

AFFORDABILITY

- Options available with lower first-cost pricing compared to standard drywall construction methods.
- Recover up to 35% of your wall project investment in the first year with tax code Section 179.
- Depreciate demountable walls in 7 years vs 39 years for drywall.

FLEXIBILITY

- Ability to accommodate any design layout.
- Reversible doors and door frames.
- Ease of panel replacement saves time and money on reconfigurations.
- Unlimited wall panel material choices.
- Integrates with existing construction or even existing wall systems!

FUNCTIONALITY / PERFORMANCE

- NxtWall wall systems are scalable to fit your budget and building needs.
- Integrates with imperfect building conditions such as non-level floors, curvilinear layouts and out-of-plumb building columns.
- Eliminate the risk of incorrect field measurements and panel sizes by using our field-fit components.
- Modular power options available, both electrical and data can be added at monitor, desk or standard height.



© 2017 NxtWall, LLC all rights reserved v0917

5200 South Sprinkle Rd • Kalamazoo, MI 49002
info@nxtwall.com • 269.488.2752



nxtwall.com